



*Second Annual*  
**FILL Study & Travel Program**  
*across*  
**The Lewis & Clark Trail**  
*from St. Louis, Missouri to Astoria, Oregon*  
**Sat, Aug 1 – Sun, Aug 16, 2020**  
*with*

**Mr. Gordon Ward**

*Author, Life on the Shoulder: Rediscovery and Inspiration Along the Lewis & Clark Trail (2005)*  
*Singer & Songwriter / FDU Florham Alumnus, 1981*

**Prof. Gary Darden**

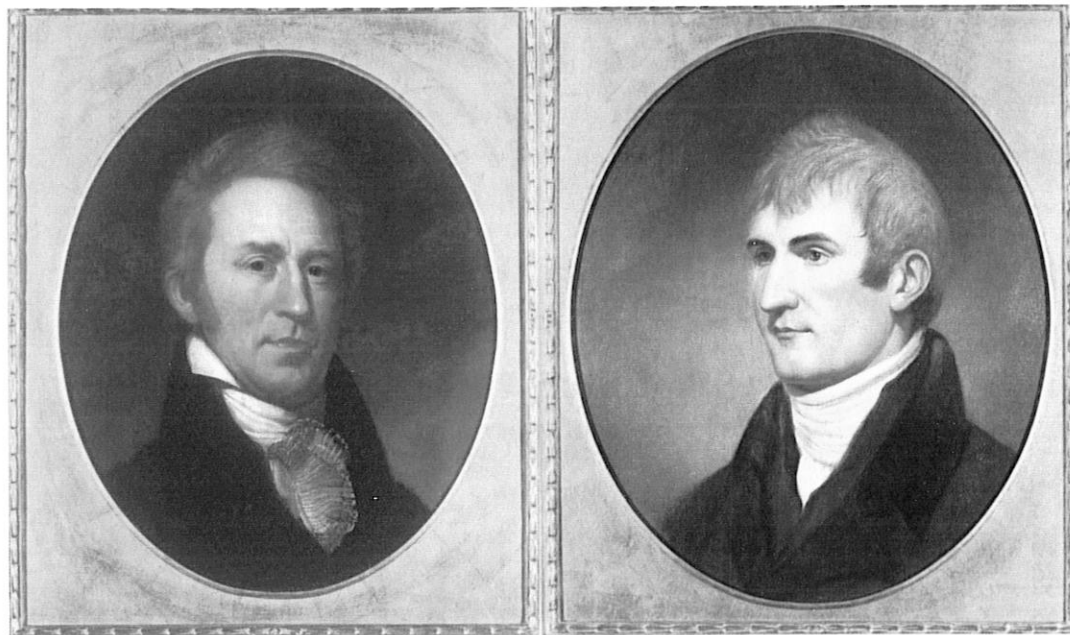
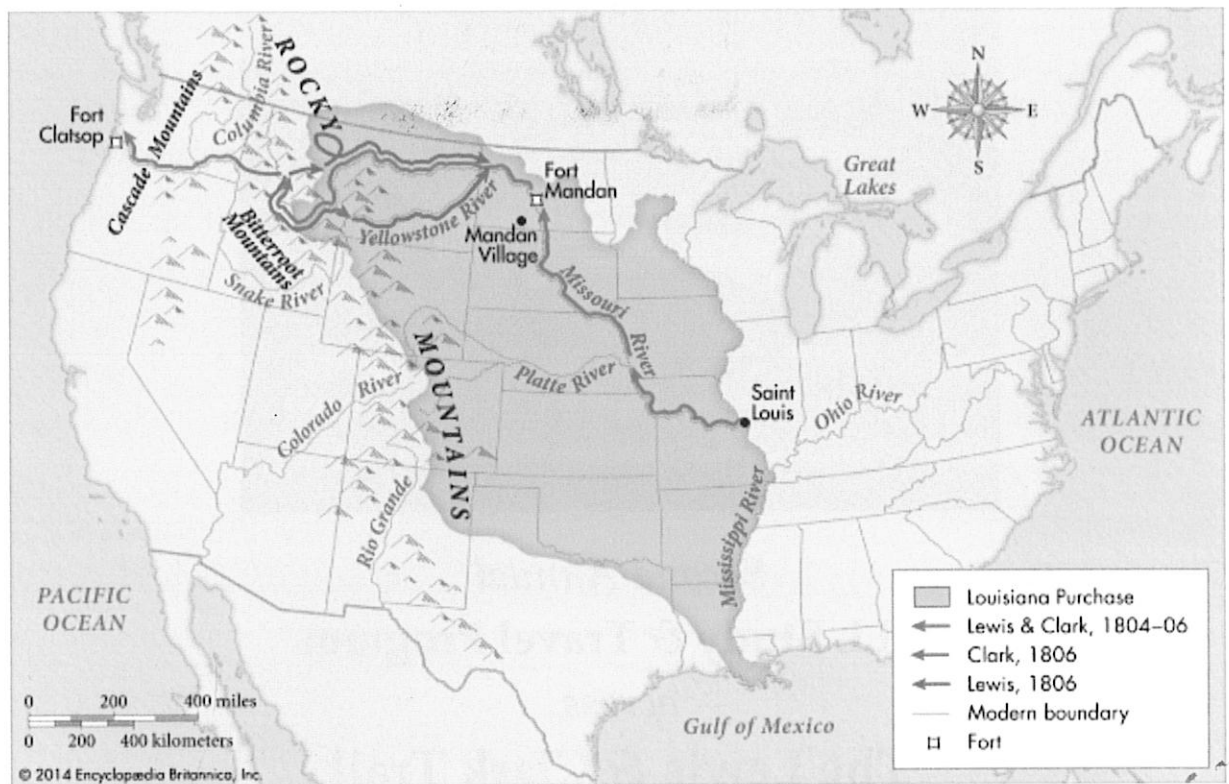
*Associate Professor of American & World History*

**Prof. Bruce Peabody**

*FILL Director / Professor of American Government & Law*



Personal. Global. Transformational.



# ITINERARY

NOTE: Included meal codes per day: Breakfast [B], Lunch [L], Dinner [D]

## SAT, 1 AUG – Group Arrivals in St. Louis – [D]

Start program in St. Louis with group flight available from Newark, settle in hotel.

**Group Welcome Dinner** at the site of **Camp Wood**, where Lewis & Clark's "Corp of Discovery" prepared for their epic journey West.



## SUN, 2 AUG – St. Louis / St. Charles / Columbia, MO – [B]

Visit the **Missouri History Museum** in St. Louis, and continue upriver to historic **St. Charles** Missouri. First settled by French-Canadian fur traders in 1769, then under Spanish rule, the settlement was acquired by the U.S. in 1804 with the formal transfer of territory under the Louisiana Purchase from France. The settlement was the last "civilized" stop for Lewis & Clark before heading West. Overnight in Columbia, Missouri.



**MON, 3 AUG – Arrow Rock / Fort Osage / Kansas City, MO – [B, L]**

Visit the historic town that grew up around **Arrow Rock bluff** and nearby salt licks that Lewis noted on the 1804 outbound journey, as well as the replica of **Fort Osage**, originally built at the suggestion of Clark to protect the fur trade in the region. After lunch visit the **Arabia Steamboat Museum**. Overnight in Kansas City.



**TUES, 4 AUG – St. Joseph, MO / Council Bluffs, IA – [B, D]**

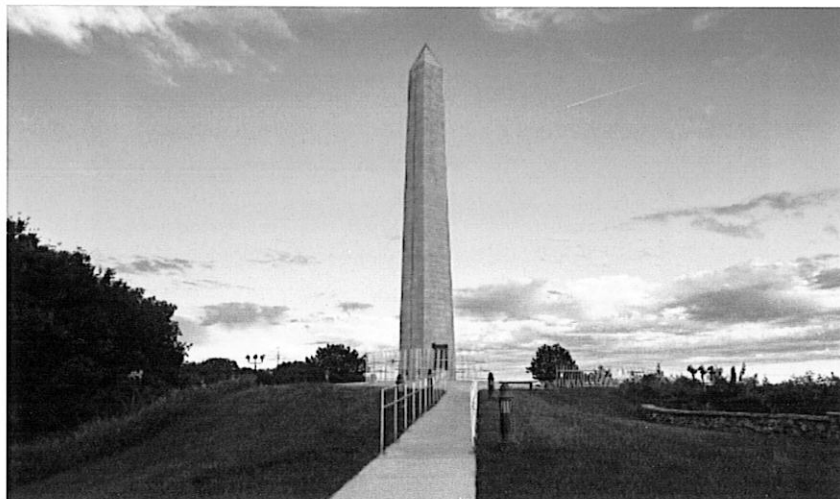
Two months after departing from St. Louis, the Corps of Discovery was still in present-day Missouri. Before departing Missouri, visit the historic sites of **St. Joseph** with a local expert, including the **Remington Nature Center**. The river runs northward here and leads to Council Bluffs, Iowa, named for the Expedition's first encounter with Native Americans. Group interpretive dinner riverside. Overnight in Council Bluffs, Iowa across the Missouri River from Omaha, Nebraska.



WEDS, 5 AUG – Fort Atkinson, NE / Sioux City, IA / South Sioux City, NE – [B]



Visit **Fort Atkinson** in Nebraska, another frontier fort built on the recommendation of Clark, and travel onward to visit the **Lewis & Clark Interpretive Center** in Sioux City, Iowa, with the **Sgt. Charles Floyd Monument** that honors the only fatality of the entire journey. Overnight across the river in South Sioux City, Nebraska.



**THURS, 6 AUG – Ponca State Park, NE / Spirit Mound, SD / Chamberlain, SD – [B, D]**

Visit unique geological formation which the Expedition climbed in their passage upstream along the Northern Plains. **Gavin's Point Dam** marks the site of the first encounter with the Yankton Sioux. Enjoy an authentic meal served on the banks of the Missouri River to cap a great day of natural sites. Overnight at **Arrowwood Resort at Cedar Shores** along the banks of the Missouri River in Chamberlain, South Dakota.



**FRI, 7 AUG – St. Joseph Indian School, SD / Akta Lakota Museum, SD / Bismarck, ND – [L]**

Visit the famous **St. Joseph Indian School** where the outstanding **Akta Lakota Museum** in South Dakota offers a view of the Native Americans whose lives were profoundly impacted by the course of events set in motion by the discoveries of the Lewis & Clark Expedition. Group lunch on the banks of the Bad River where the Corps encountered their first “hostile” Native Americans. Overnight in Bismarck, North Dakota.

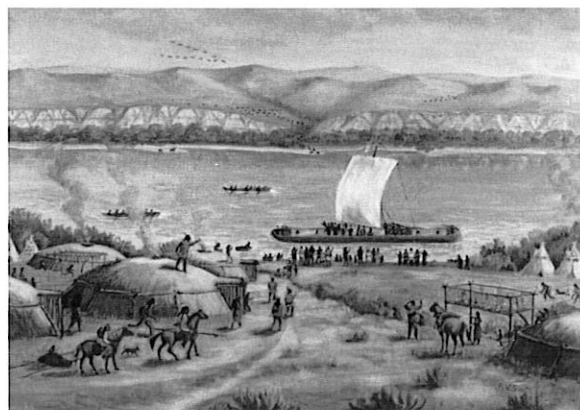


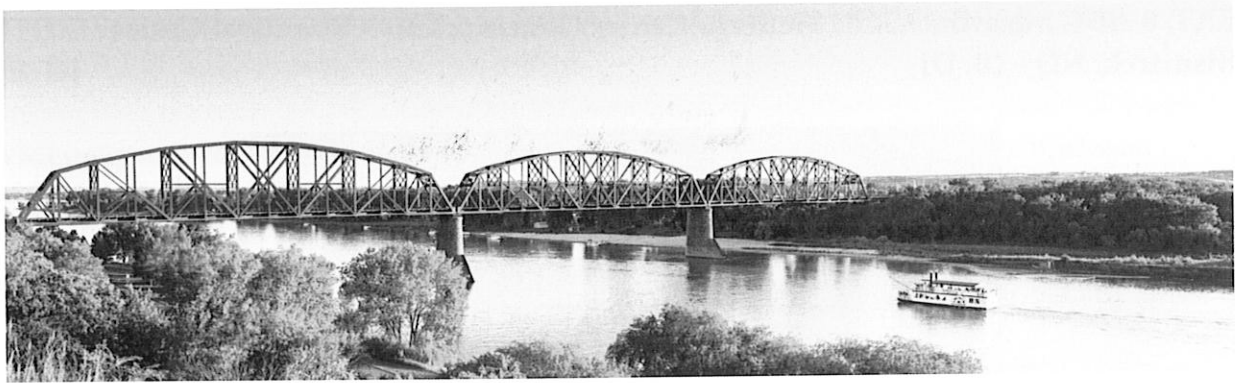


SAT, 8 AUG – North Dakota Heritage Center / Lewis & Clark Riverboat Cruise /  
Bismarck, ND – [B, D]



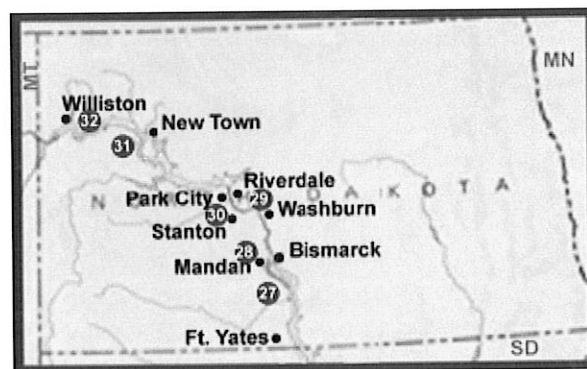
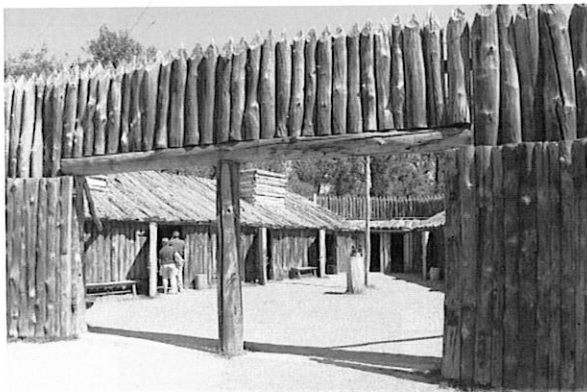
The latter-day **Fort Abraham Lincoln** (Lt. Col. George Custer's last assignment) was built adjacent to an ancient earthlodge village which was already abandoned when Lewis & Clark sailed by. Visit the rebuilt lodges at **On-A-Slant Village** and the outstanding exhibits at the **North Dakota Heritage Center** before boarding the **Lewis & Clark Riverboat** for a **Dinner-Cruise on the Missouri River**. Overnight again in Bismarck, North Dakota.





SUN, 9 AUG – Fort Mandan / Lewis & Clark Interpretive Center / Williston, ND – [B]

Visit the replica of **Fort Mandan**, the site where the Expedition wintered under the watchful eye of the Mandans and Hidastas. Visit the new **Lewis & Clark Interpretive Center**, with a complete set of Karl Bodmer's iconic art of the Native Americans and natural wonders he encountered on his own western voyage 30 years after Lewis & Clark. His 400 renderings portray an undisturbed terrain of Native American life as first seen by Europeans 200 years ago. Visit the only park in the National Park System set aside to commemorate the Plains Indian: **Knife River Indian Villages** with its model earth lodge and interpretive center. Overnight in Williston, North Dakota.

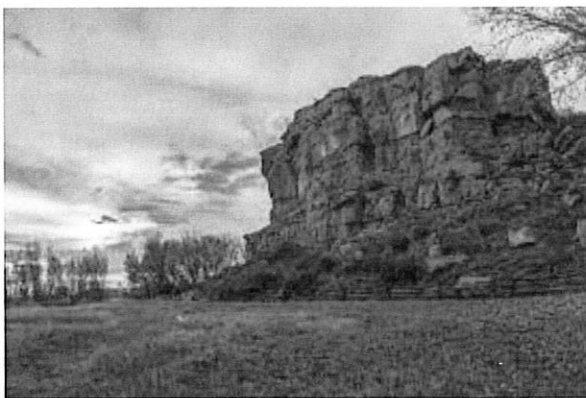




MON, 10 AUG – Fort Union / Pompeys Pillar / Billings, MT – [B, D]



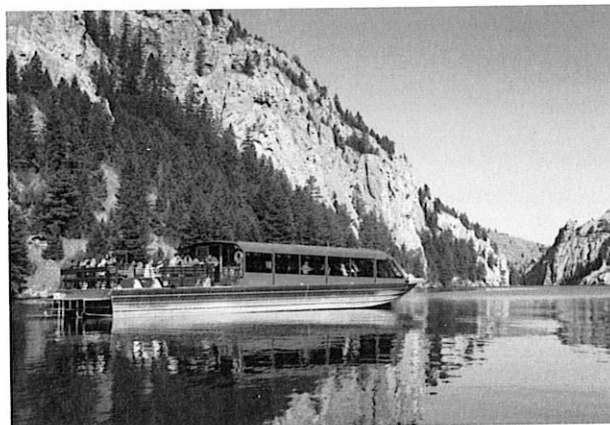
Tour the beautifully restored **Fort Union**, established by John Jacob Astor's American Fur Company, and what was the most important fur trading post on the Missouri River between 1822 and 1867. Visit **Pompeys Pillar National Monument**, named for Sacajawea's infant son (and the spelling of her name depends on what state you are in). Clark carved his name in the rock on the return trip in 1806, and remains one of the few physical evidences left by the Expedition along the Trail. Overnight in Billings, Montana.



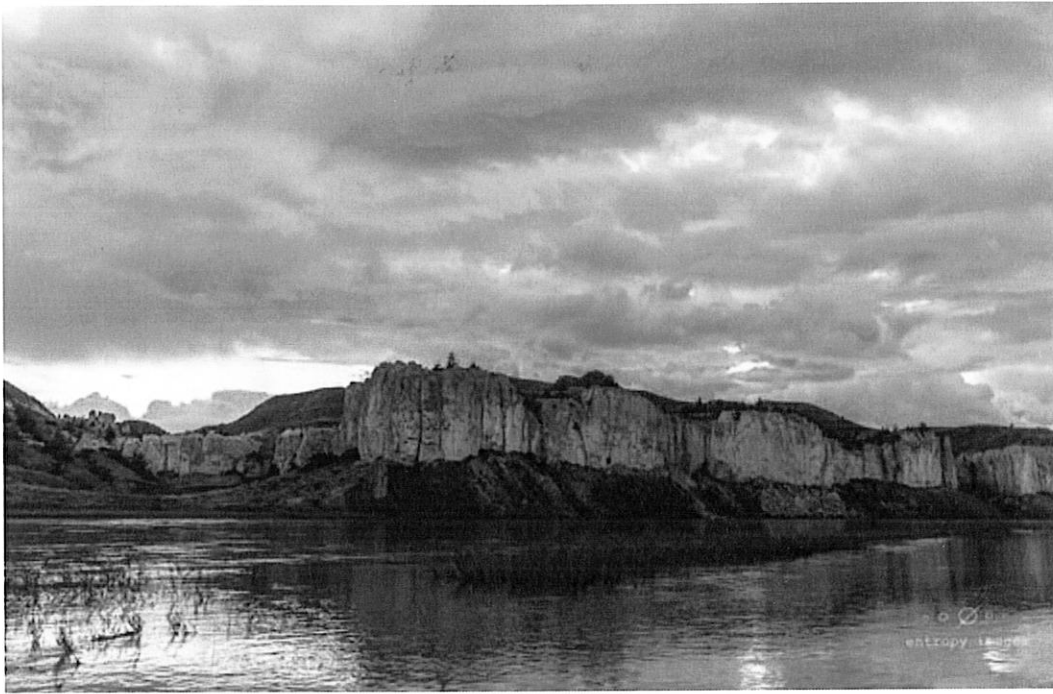
TUES, 11 AUG – Gates of the Mountains / Missouri River Headwaters State Park / Great Falls, MT – [B, L]



Visit the **Missouri River Headwaters State Park** where Lewis & Clark discovered (and named) the confluence of the Jefferson, Madison, and Gallatin Rivers. After a picnic lunch, move onward to the **Gates of the Mountains**, named by Lewis after towering cliffs appeared to block the way up the Missouri River. As the Expedition neared the cliffs and changed directions, the cliffs appeared to pull apart like a huge gate. Enjoy an interpretive **Boat Ride** on the Missouri River with the same views as Lewis & Clark first saw. Overnight in Great Falls, Montana.



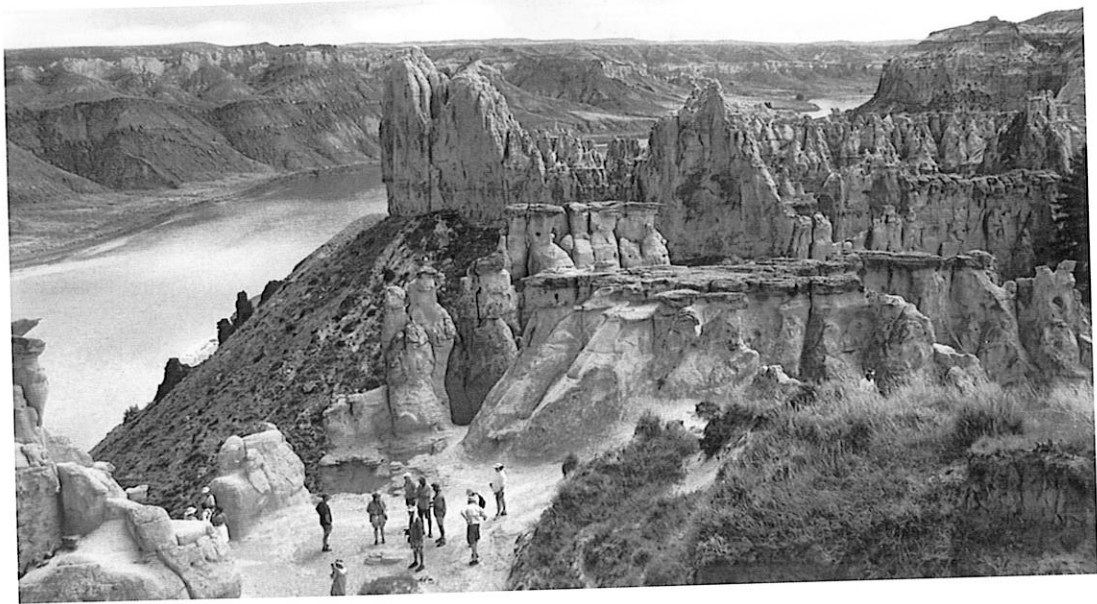
WEDS, 12 AUG – Fort Benton / Clark Interpretive Center / Great Falls, MT – [B, D]



First stop is historic **Fort Benton**, a bustling 19<sup>th</sup> century river port and highest point on the Missouri River served by steamboats. Visit the **C.M. Russell Museum**, devoted to the artwork of its namesake, the legendary Great Falls “cowboy artist” (1864-1926). Next is the **Lewis & Clark Interpretive Center** in Great Falls, one of the newest and best along the Trail. In addition enjoy living history programs and an outdoor dinner. Overnight in Great Falls, Montana.



THURS, 13 AUG – Lolo Trail / Nez Perce National Park / Clarkston, WA – [B, L]



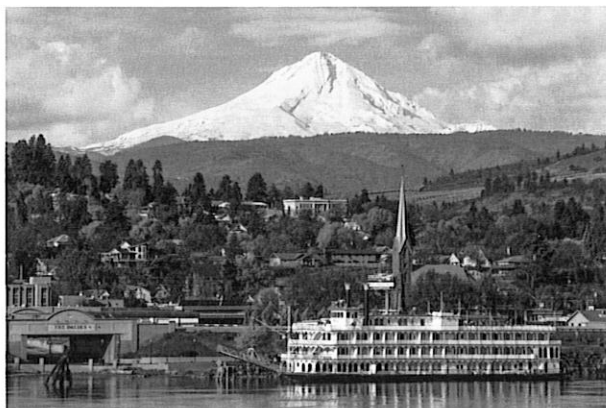
The **Lolo Trail** proved to be one of the most daunting legs of the Trail for the Expedition, one that led to frostbite and hunger in the **Bitterroot Mountains**. A local guide will help us traverse this passage with modern ease and understand the chronology of moving westward in this landscape as we enjoy a picnic lunch along the way. Visit the canoe camp where the Expedition halted to hollow out logs as the Native Americans had instructed them. Learn more about these inhabitants at the Visitor's Center of the **Nez Perce National Historic Park**. Overnight in Clarkston, Washington State.



FRI, 14 AUG – Sacajawea State Park, WA / Columbia Gorge Discovery Center, OR / Hood River, OR – [B]



At the site of present day **Sacajawea State Park**, Lewis & Clark met with a thriving community of Native Americans at the strategic confluence of the Snake and Columbia Rivers on Oct. 16, 1805. Visit the outstanding **Columbia Gorge Discovery Center & Museum**. Overnight in Hood River, Oregon, nestled beneath Mount Hood on the south bank of the Columbia River that led the Expedition down the Lower Columbia River to the Pacific Ocean.

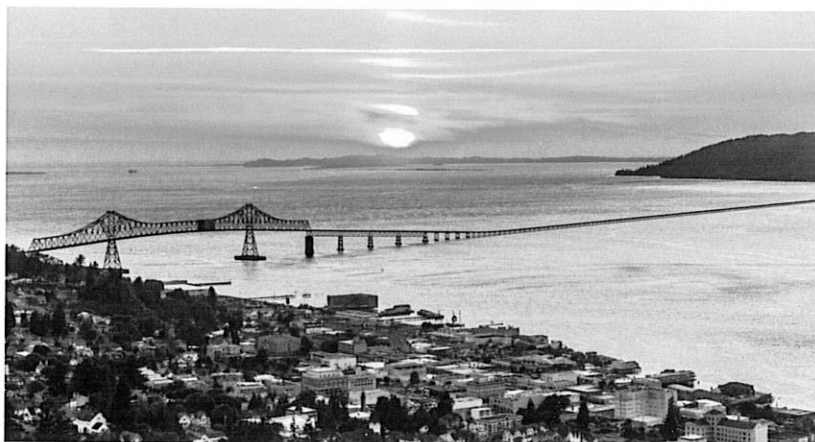




SAT, 15 AUG – Columbia Gorge / Fort Clatsop / Astoria, OR – [B, D]



**Columbia Gorge National Scenic Area** and **Multnomah Falls** highlight the morning sites. Then visit **Fort Clatsop**, the winter camp and capstone of the Lewis & Clark Trail. A **Gala Farewell Dinner** rounds out the day and the two-week journey. Overnight in Astoria, Oregon.





SUN, 16 AUG – End of the Trail / Pacific Coast / Seaside / Portland, OR – [B]



Finish the 16-day journey with the site where Sacajawea saw her beached whale, and **Seaside** where Lewis & Clark set up their **Salt Works**. Return to Portland along a scenic drive through the verdant **Willamette Valley**. Airport transfers to Portland airport after 1:00 pm. Bon voyage!



## TRIP PRICE & DETAILS

### All-Inclusive 16-Day / 15-Night Travel Package Price:

Price includes everything outlined in above itinerary, excluding roundtrip flight from/to Newark

Per Person (Double Occupancy): \$4,495

Per Person (Single Occupancy): \$5,231

Payment Deadlines: \$600 Deposit (non-refundable) due Dec 15, 2019 / Balance payment due Feb 15, 2020

### Group Hotels:

All hotels are AAA rated 3 or 4 Diamond: *"The descriptive ratings are assigned exclusively to properties that meet and uphold AAA's rigorous Approval standards."* (AAA.com)



Distinguished, multifaceted with enhanced physical attributes, amenities and guest comforts.



Refined, stylish with upscale physical attributes, extensive amenities and a high degree of hospitality, service and attention to detail.

### Group Meals Included:

25 Meals: 14 hot breakfasts, 4 lunches, 7 dinners (including Welcome & Gala Farewell dinners, plus Missouri Riverboat dinner cruise)

### Deluxe Luxury Charter Bus:

**Arrow Stage Lines** – 54 Passenger / Superior Safety / Spacious Seating / Abundant Luggage Space / WiFi / Outlets / Video Screen Monitors for Films / Onboard Lavatory (plus ample 2-hour restroom breaks en route)

Arrow Stage Lines Passenger Satisfaction: *"Based on 2018 customer feedback, we received a 98% customer satisfaction rating, a 97% customer recommendation rating, and a 97% on-time performance rating. Arrow Stage Lines' drivers averaged a 98% customer satisfaction rating, and our customers rated equipment cleanliness at 98% over the course of the year."* (arrowstagelines.com)



**Onboard Seating & Activities** — Ample space onboard with near 2:1 seat to passenger ratio. There will be ample activities to bid travel time, to include films relevant to sites, ongoing trivia games with prizes.

**Group Flight Arrivals & Departures:**

*Flights from/to Newark priced separately; a group flight will be earmarked for convenience*

Arrivals: St Louis on Sat, Aug 1, 2020 *before* 3:00 pm

Departures: Portland on Sun, Aug 16 *after* 1:00 pm

Note: Since the final overnight in this program will be in Astoria on the Pacific Coast of Oregon, passengers booking flights before 1:00 pm on departure day will be responsible for making their own arrangements from Astoria to Portland Airport (104 miles). Otherwise, final day is timed to transfer group from Astoria to Portland Airport for flights departing after 1:00 pm.

**Activity Level:**

Moderate, Some Walking, *with* Optional Hiking

**Recommended Clothing:**

Casual is key for traveling out West! The program's eight-state region covers many climate zones and will involve a wide range of weather. A sweater and jacket for layering, jeans and shorts, and two pairs of comfortable walking shoes a must! A raincoat or poncho is recommended. Optional dressier clothing for first and last night festivities.

**Baggage Handling:**

Baggage handling for *one large bag* per person at the hotels is included in travel fee. Additional suitcases and carry-on bags are the responsibility of each traveler.

**Laundry Facilities:**

Most hotels on this itinerary have laundry facilities for the use of guests, and time is allowed for their use.

**Tipping Guidelines:**

Travel Company's Licensed Tour Director (*with group for duration of trip*) – \$6 to \$7 per person, per day

Charter Bus Driver – \$5 to \$6 per person, per day

Site Guides (*where applicable*) – \$1 half day / \$2 full day per person

Since tipping is a personal matter, they will be handled individually rather than as a group collection.

**Licensed Tour Operator:**

*Contracted by FDU for program*

Shebby Lee Tours, Inc. – Company President Shebby Lee is a historian, researcher, and writer specializing in the heritage of the Great American West, and is a Certified Tour Professional. She has a broad background in the arts, media, and publications prior to founding the tour company. Her early training was in theatre and she served a tour of duty as an entertainer with the USO.

**Tour Operator Testimonials:** (*See Next Page*)

**PLEASE NOTE — FDU Faculty Chaperones & Contact for all Trip Information / Registration:**

**Prof. Gary Darden** – [darden@fdu.edu](mailto:darden@fdu.edu)

**Prof. Bruce Peabody** – [bpeabody@fdu.edu](mailto:bpeabody@fdu.edu)



## Explore the Lewis & Clark Trail

Shebby Lee Tours, Inc.  
PO Box 1032  
Rapid City, SD 57709  
Shebby Lee, Tour Planner  
Kay Carger, Reservationist  
Toll free: 800-888-8306  
Fax: 605-343-7558  
shebby@shebbyleetours.com  
www.shebbyleetours.com

- ✦ During the Bicentennial, re-trace the Trail from St. Louis to Portland
- ✦ Meet mountain men, fur traders & the men of the Corps
- ✦ Authentic meals, music, interpretive programs
- ✦ Bookings available for individuals and pre-formed groups



### Specializing in the historic and cultural heritage of the Great American West since 1978

- ✦ tours designed, coordinated and hosted by experienced travel professionals and award-winning historians
- ✦ 39 years in business
- ✦ two Certified Tour Professionals (CTP) on staff
- ✦ Best Tour Operator of 2002 : North American Travel Journalists Association
- ✦ member American Bus Association
- ✦ charter member Travel Alliance Partners



If you've been wondering if you would enjoy an all-American journey of discovery, read on:

*"A truly perfect Lewis & Clark tour. I had the time of my life."*

- Ann Corrigan, St. Louis, MO

*"We just wanted to let you know how happy we are to have taken the Lewis and Clark journey. Not only did we learn so much about the Corps of Discovery and see parts of the country we had never seen before, we got to meet a group of very nice, interesting and fun people. All in all we had a wonderful time!"*

- Sherry Fitzpatrick, Burlington, MA

*"This has been a first class experience all the way. I can very highly recommend it."*

- Joyce Kruse, Jacksonville, FL

*"I devoted two weeks to understanding the Corps of Discovery and was richly rewarded."*

- Rich Lehmann, Washington, DC

*"The most educational & enjoyable tour we've ever taken."*

- Mac & Donna Burton, Flemington, NJ

*"This was one of the best planned, best delivered, and most fun trips I have ever been on! I learned so much & loved every minute of it."*

- Carol Walker, Calgary, AB

*"I took over 1500 photos on what was a trip of a lifetime for me. The landscape, the history of the Corps and the Native Americans and the spirit within the group truly unforgettable."*

- Ron England, Selby, North Yorkshire, UK

*"I can't say enough about this tour, right from the tour director, the bus driver, the guides and the places we stayed. Thanks for a great time."*

- Harold Lufkin, Glens Falls, NY

NOTES:

This image shows a single sheet of white paper with horizontal blue or grey ruling lines. The lines are evenly spaced and run across the width of the page. There are no margins, text, or other markings on the paper.